

The Art & Science of Graphics, Animations and Mapping for the Judge or Jury

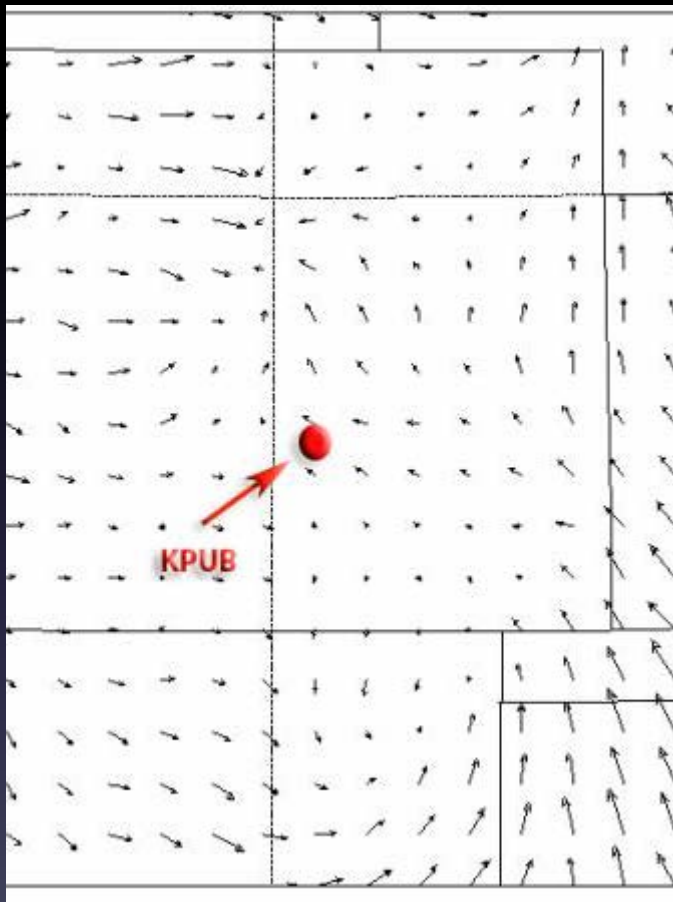
Elizabeth J. Austin, Ph.D., C.C.M. #572

WeatherExtreme Ltd.



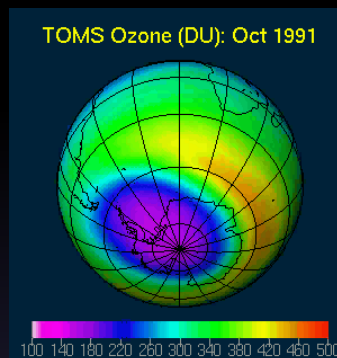
From Basic to Advanced (and everything in between)

SIMPLE but works

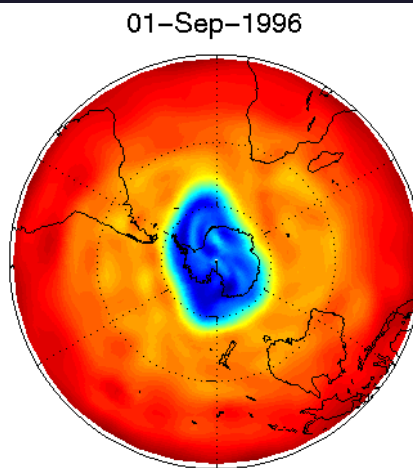


ADVANCED but necessary

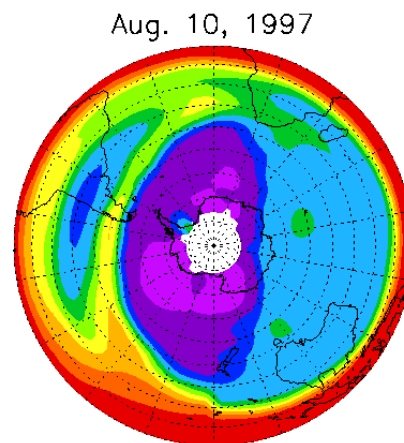
Ozone Depletion



Polar Vortex Winds



Nitrous Oxide Mixing



Proof Everything...and have someone else proof it too!



[illegible]

Too Little

A Graphic Disaster

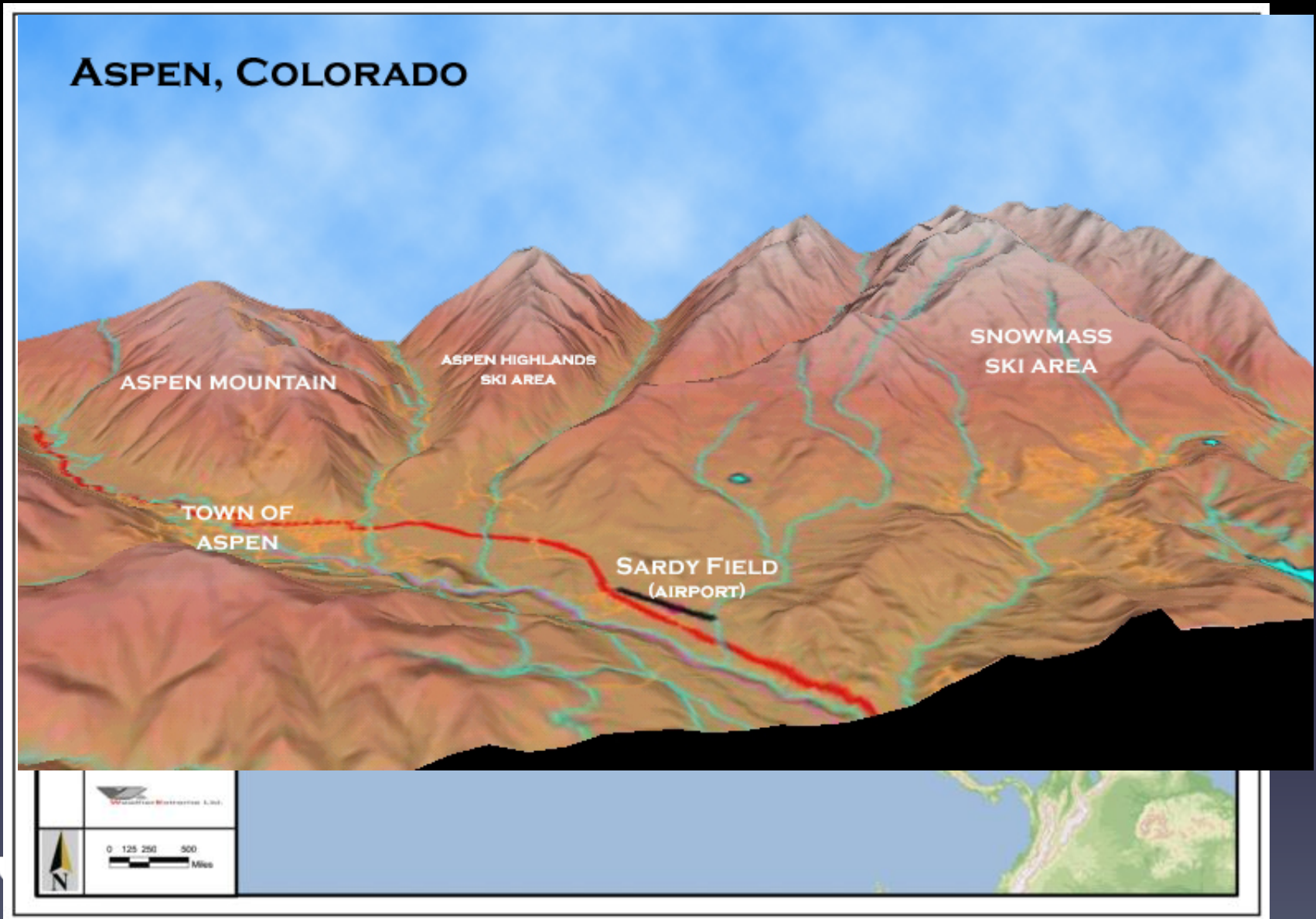
Lightning Strike Data

Tried to show lightning strikes along path of aircraft



Be sure to review your graphics from a “layman’s” perspective

What’s a possible problem with these graphics?



Be sure you can 'defend' each point labeled on your
graphics & animations

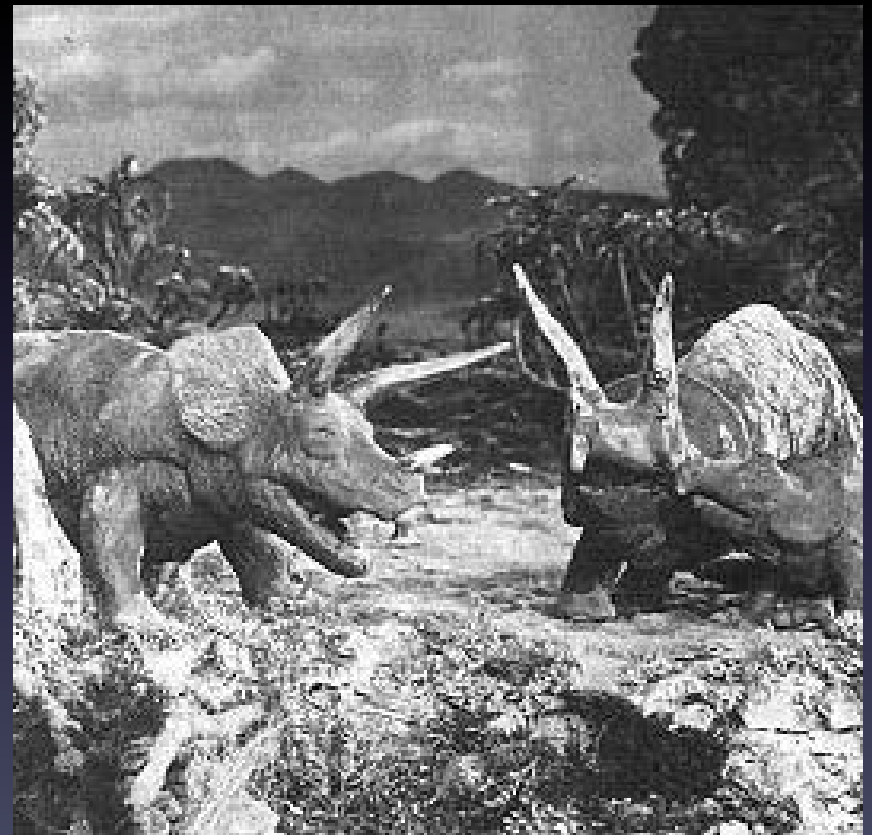


Don't feel pressure to create "Star Wars" when all you can do is
"The Lost World"

Star Wars

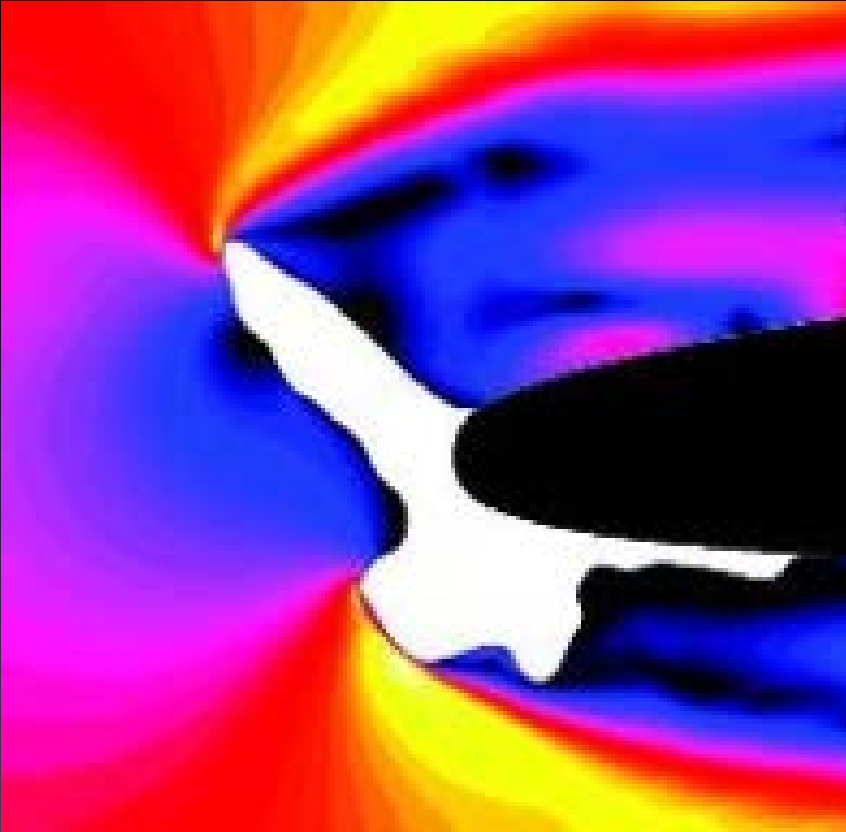


1925 silent movie 'The Lost World'



A picture is worth a thousand words

Theoretical



Actual

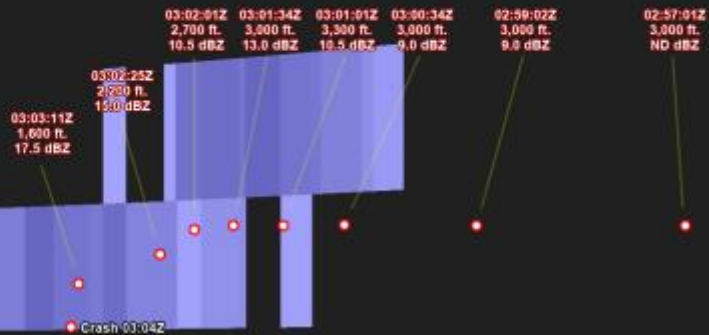


Two 'non-meteorologist' VIP's

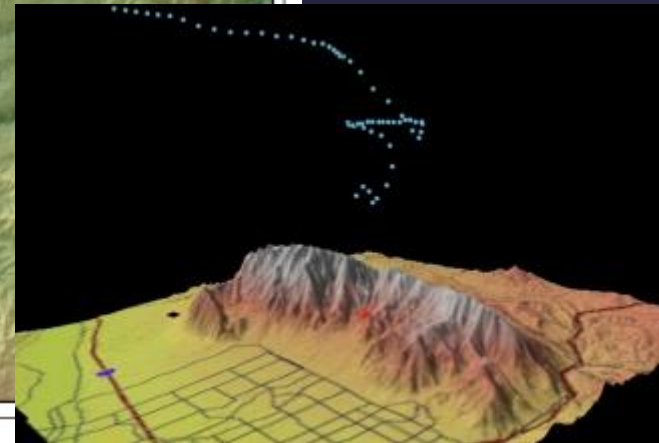
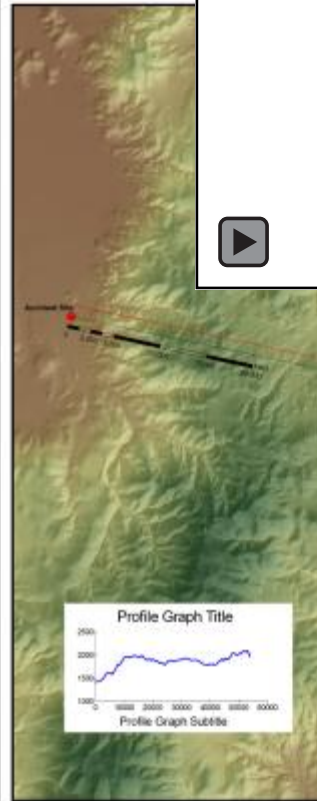
GRAPHICS EXPERT

02:59:02Z KOAX Base Reflectivity Cross Section

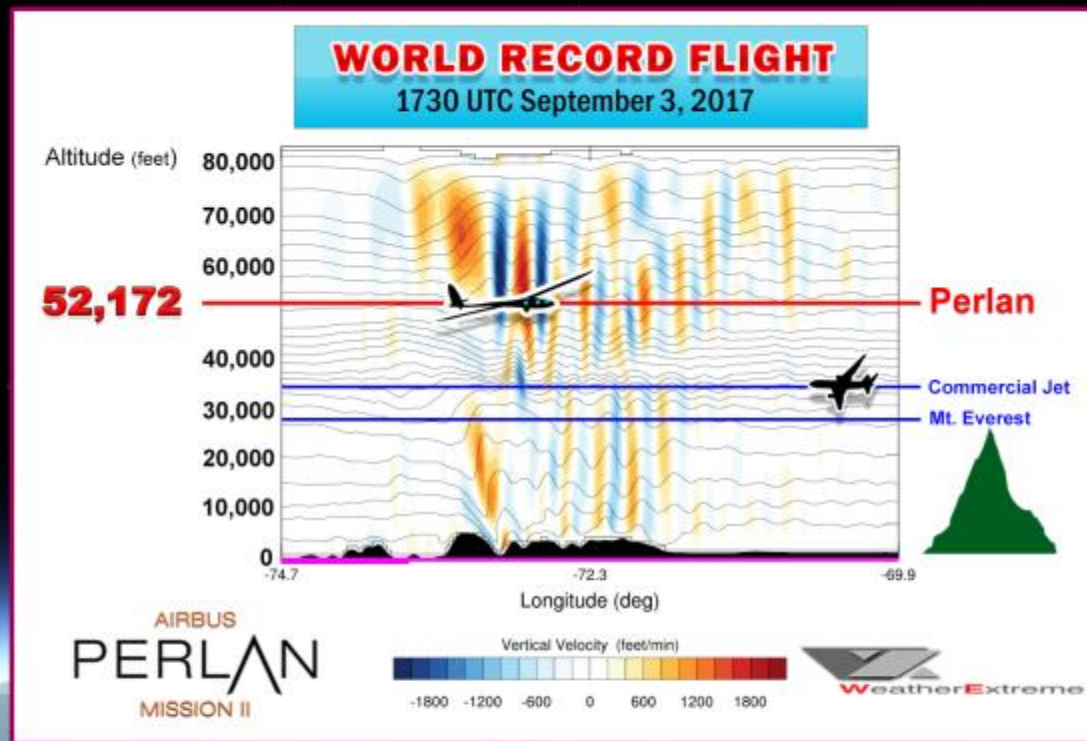
10,000 feet



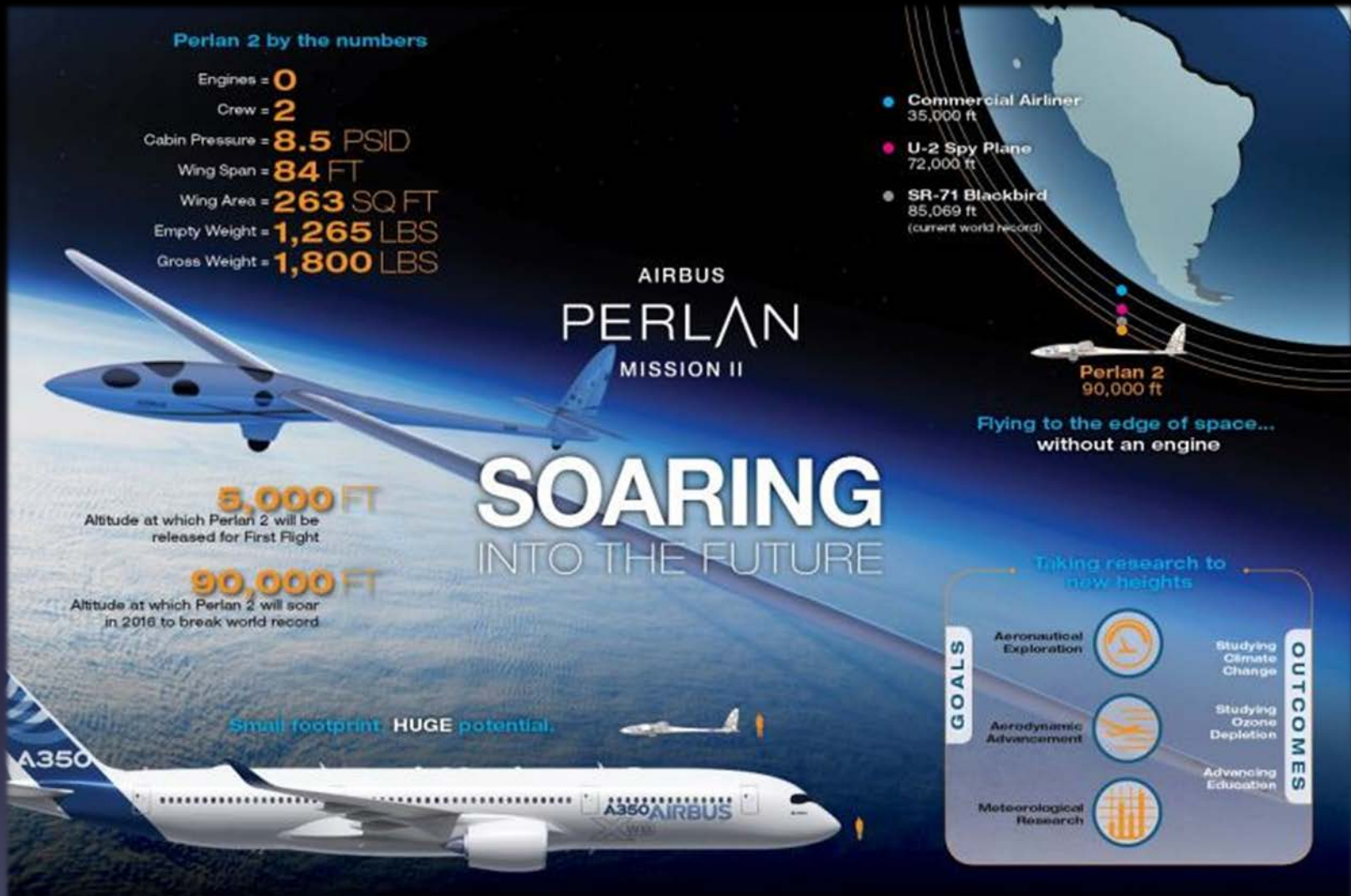
MAPPING EXPERT



El Niño, La Niña and Annual Snowfall at Lake Tahoe

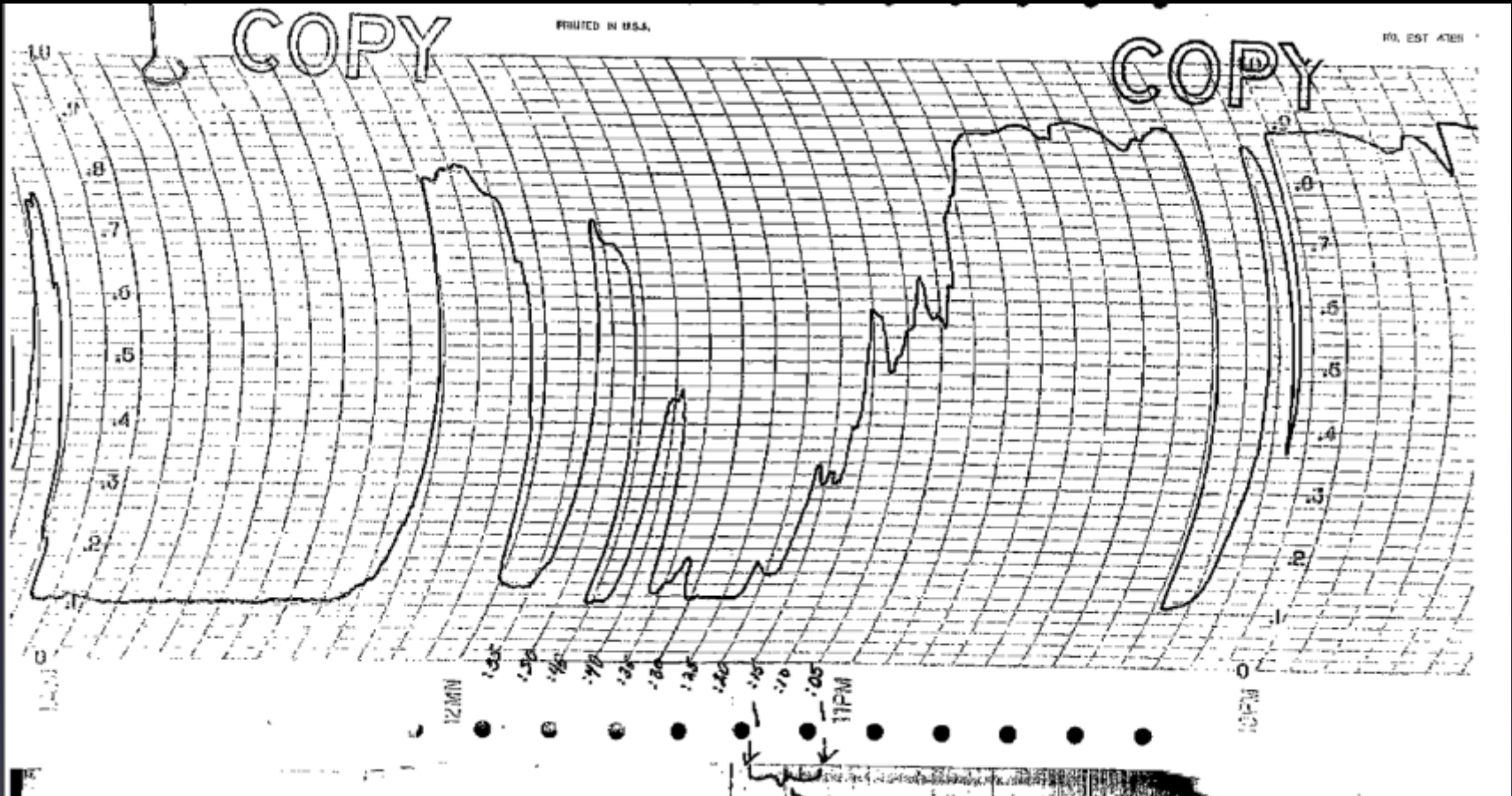


"Info-Graphics"



Presenting the Complex to the Judy & Jury

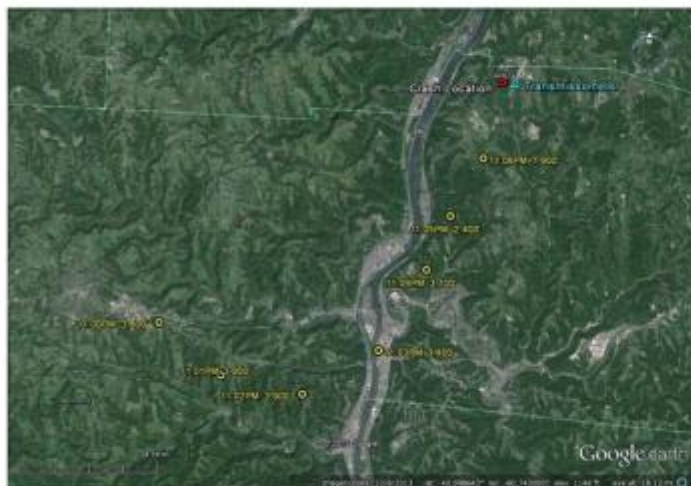
BEFORE



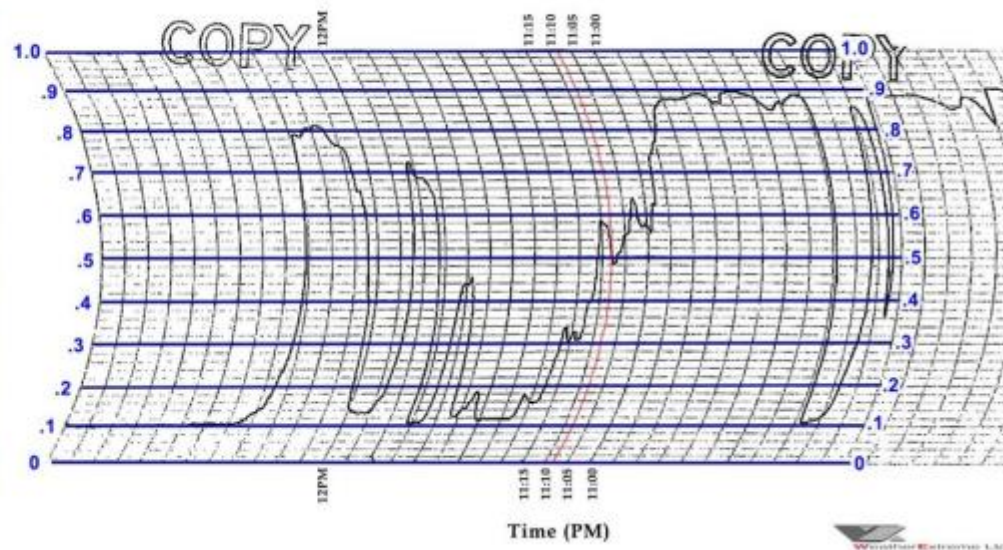
Trace from Transmissometer on Runway (Source: NTSB)

INTERMEDIATE

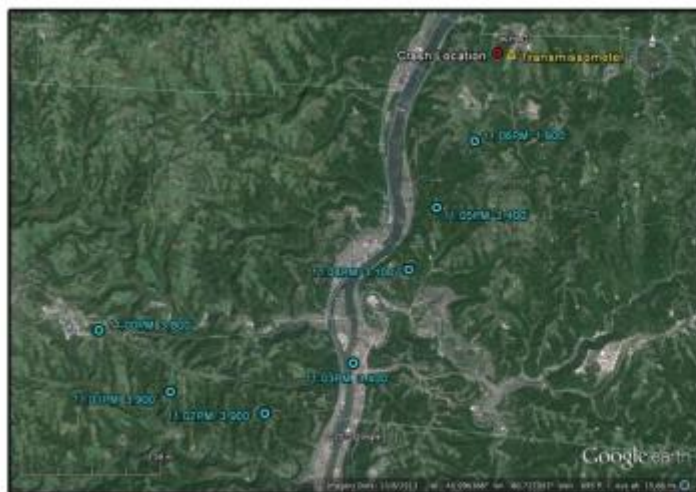
Airplane Flight Path Times July 18, 2004



Transmissometer Graph July 18, 2004

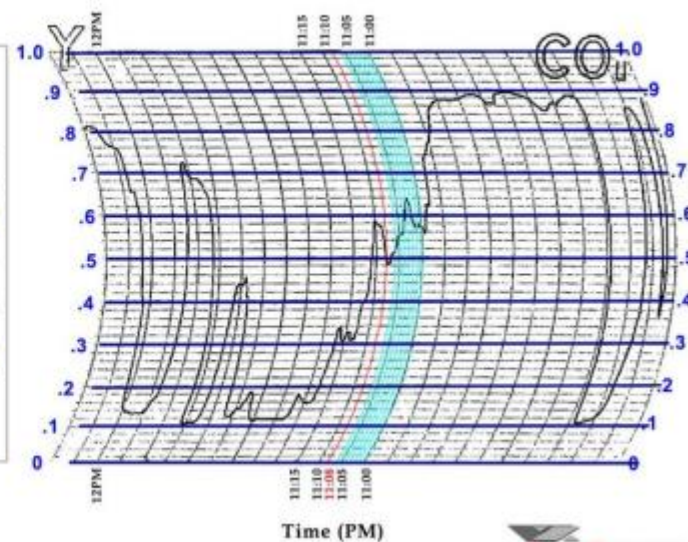
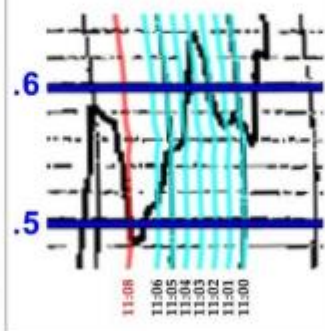


Airplane Flight Path Times July 18, 2004



Transmissometer Graph July 18, 2004

Transmissometer Graph Zoom View



Thank You



elizabeth@weatherextreme.com